

# FOR TOPGUN1 ONLY: Installing iGo Figure Version 2.08.4

If you are only receiving the TopGun1 error and have been using the application with the workaround, simply perform the following steps:

NOTE: If you do not have internet at your club, you will need to save BOTH of the files below to an external device to take to the club.

1. Restart your computer.
2. Click here: <http://www.igofigure.com/Downloads/2X/v2084.exe>
3. **Save** the file to your **Desktop**.
4. Right-click on the file and select **Properties** and click **Unblock**, if you see that button. If you do not see that button, proceed to the next step.
5. Double-click on the file that appears called **v2084.exe**.
6. Click here: <http://www.igofigure.com/Downloads/2X/208/LoginFix2.exe>
7. **Save** the file to your **Desktop**.
8. Right-click on the file and select **Properties** and click **Unblock**, if you see that button. If you do not see that button, proceed to the next step.
9. Double-click on **LoginFix2.exe** and launch iGo Figure Version 2.08 as normal.

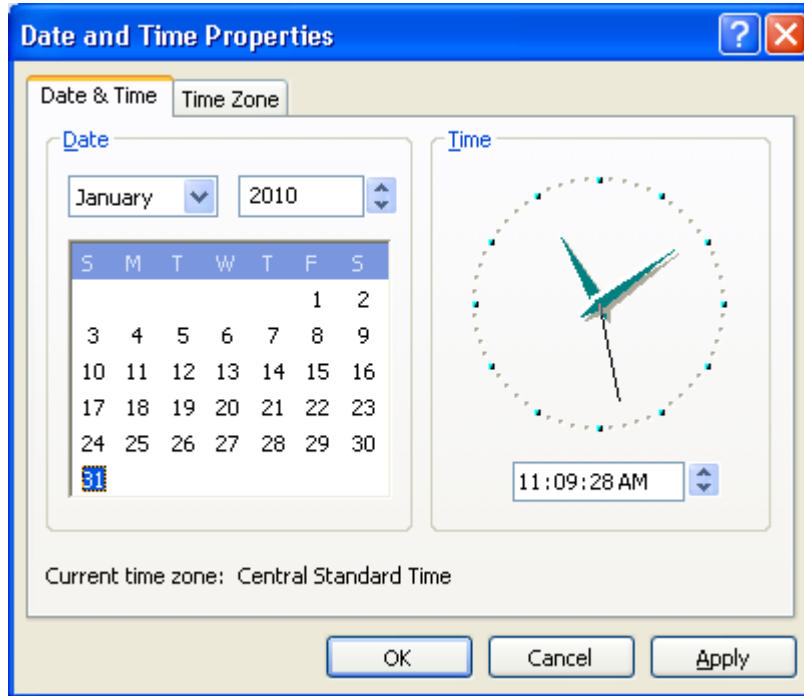
---

# FOR ALL OTHER ERROR MESSAGES: Installing iGo Figure Version 2.08.4

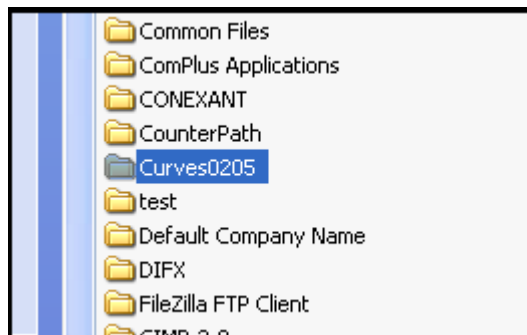
1. Save the files listed below to your desktop. If you do not have internet at the club, you will need to print these instructions as well as save the three files below:
  - **Version 2.08.3**, which you can download here: <http://www.igofigure.com/Downloads/2X/208/v2083.zip>
  - **Version 2.08.3 Keytag Fix (LoginFix2)**, which you can download here: <http://www.igofigure.com/Downloads/2X/208/LoginFix2.exe>
  - **Version 2.08.4**, which you can download here: <http://www.igofigure.com/Downloads/2X/v2084.exe>
  - Right-click on all of these files, individually, and select **Properties** and **Unblock** the files. If you do not see an **Unblock** option continue to the next step. If you are taking these files to the club, ensure you **Unblock** them there as well.

Click on each file and choose **Save**, select your **Desktop** and click **OK**. If you do not have internet at your club, save these files to an external device such as a flash drive or CD. You will need all three files with you at the club.

- Restart Your Computer.
- Double-Click on the time display in the lower right corner on your computer screen. This will bring up the **Date Time Properties** window, change the date to January 31, 2010 and click **Apply**:



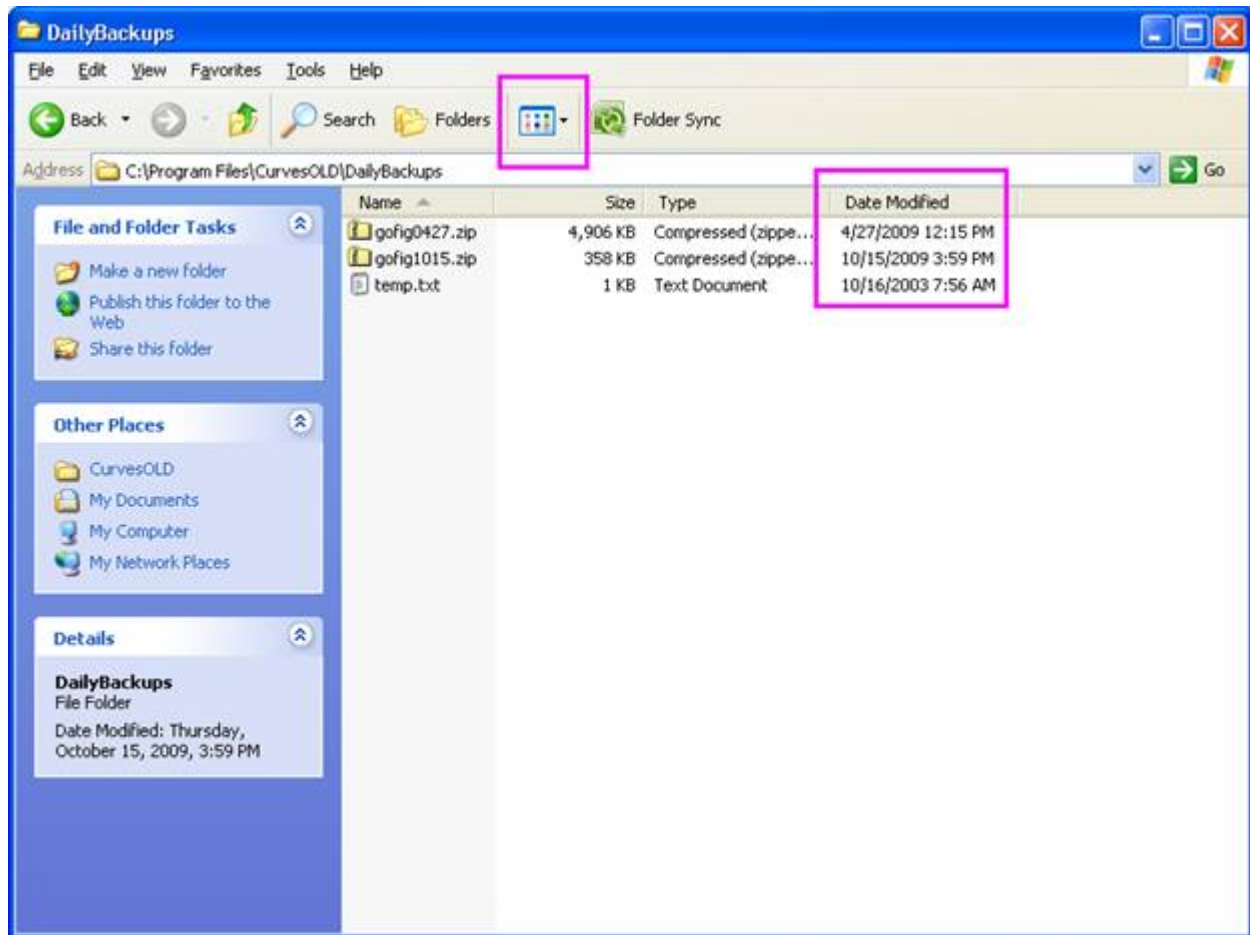
- Go to **My Computer**, then **Local Disc (C)**, then **Program Files**, and you will see a **Curves** folder. Right-click on the **Curves** folder and select **Rename**. Click by the end of the word "Curves" and type **0205** and press **Enter**. This will rename the folder to **Curves0205**.



You have completed that step, so close that Window.

- Click on **Start** and the select **Control Panel**. Select **Add/Remove** and click on **Go Figure 2.08.1**. Click **Change**, select **Repair**, and follow the simple, on-screen instructions. Close all windows.
- Right-click on the file you saved to your desktop called **V2083.zip** and **Explore**. Double-click on the file that appears called **2.08.3.exe**. The file will run itself after you double-click, so simply close all windows when you are done.

- Click on **Start**, select **All Programs or Programs**, select **GoFigure**, select **Utilities**, and click on **BackupRestore**. You will need to restore the backup from January 31, 2010 or before. Select the **Restore** radio button and then click **Browse**, then **My Computer**, then **Local Disk (C)**, then **Program Files**, then **Curves0205**, then **DailyBackups**. The backup will be named **gofig0131.zip**, you can change the view of this window to **Details** view to be able to see the full **Date Modified** (see below) and look for 01/31/2010 or before. Do not restore to a date later than January 31, 2010.



- Launch iGo Figure Version 2.08.3 and ensure you can successfully view the Main Menu and you data. (Print your January Projection Sheet now if you would like). Then, exit the iGo Figure Software.
- Double-click on the file called **v2084.exe**. The file will run itself after you double-click, so simply close all windows when you are done.
- Double-click on the file that appears called **LoginFix2.exe**. Click **Install** and simply close all windows when you are done.
- Change the date on your computer back to today (as done in Step #3).
- Go to **My Computer**, then **Local Disc (C)**, then **Program Files**, and open the **Curves (not the Curves0205)** folder. Look for a file called **GoFigurePOC.MDW**, right-click and select **Properties**. If **Read-Only** is checked, remove the check and click **Apply** and **OK**.
- Launch iGo Figure Version 2 as you usually would and you should be able to launch without errors. Remember, you cannot restore back to a date AFTER January 31, 2010 even when you are fixed, this will cause you to get errors again. NOTE: If you have already processed payments after January 31<sup>st</sup>, please be sure you do not charge the members again.